



Subject Handbook

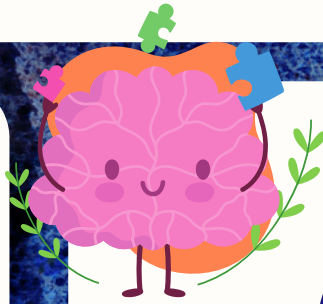
PSHE



PSHE Handbook

Vision for PSHE

We aim to have a positive impact on a number of outcomes for our young people, including their physical and mental health, safety, careers, financial capability and economic well-being..



Our PSHE Curriculum

Personal, Social, Health and Economic (PSHE) education is a school curriculum subject designed to develop the knowledge, skills and attributes students need to manage their lives, now and in the future.

Our PSHE curriculum covers a range of topics, including many pressing issues facing young people today including: mental health, staying safe online, positive relationships, drugs, alcohol, challenging extremism, careers and financial literacy. Our curriculum is designed to equip students with the necessary knowledge and skills to manage their lives effectively. We want our students to develop an understanding of the ever changing world in which we live, so we encourage them to utilise these skills by playing an active role in their community.



Our PSHE Curriculum Will Enable Pupils to:

- actively promote fundamental British values of democracy, the rule of law, individual liberty and mutual respect and tolerance of those with different faiths and beliefs;
- promote tolerance and respect of all faiths (and those with no faith), cultures and lifestyles through effective spiritual, moral, social and cultural development;
- make the most of their abilities;
- play an active, positive role as citizens in a democratic society;
- understand and develop good relationships with each other and all members of the school and wider community;
- have respect for each other and the differences between people;
- develop a healthy and safe lifestyle;
- make informed choices regarding personal and social issues – be responsible members of the school community.
-

Intent

At Guardian Angels, PSHE is considered across the curriculum and is a fundamental part of the children's school experience. In maths, children are taught the importance of a growth mindset which supports their self-belief, resilience and perseverance and supports success across the wider curriculum and in social contexts. In humanities, the children learn the significance of their local area and key figures from within it. They also have access to positive role models from the community and this supports their learning in many areas, including religious education and learning about local heritage.

In addition the emphasis on PSHE across the work of the school, Personal, Social, Health Education is taught explicitly as part of the whole-school approach. We believe that successful PSHE supports children's learning capacity and this aspect of the school's work is held in high regard as we believe that it promotes wellbeing and underpins children's development as people.

Implementation

Jigsaw covers all areas of PSHE for the primary phase including statutory Relationships and Health Education.

- Being Me in My World Includes understanding my own identity and how I fit well in the class, school and global community.
- Celebrating Difference Includes anti-bullying (cyber and homophobic bullying included) and understanding
- Dreams and Goals Includes goal-setting, aspirations, who do I want to become and what would I like to do for work and to contribute to society
- Healthy Me Includes drugs and alcohol education, self-esteem and confidence as well as healthy lifestyle choices, sleep, nutrition, rest and exercise
- Relationships Includes understanding friendship, family and other relationships, conflict resolution and communication skills, bereavement and loss

PSHE lessons are taught every week. This ensures that we are able to teach the PSHE knowledge and skills in a developmental and age-appropriate way.

To enrich the school's approach to PSHE and to broaden the curriculum, we organise events and opportunities such as Mission Weeks and participate in national drives, such as UK Parliament Week. The school's celebration of the annual 'Children's Mental Health Week' also raises awareness and compliments the school's commitment to promoting good mental health.

Furthermore, the school offers targeted support to families.

